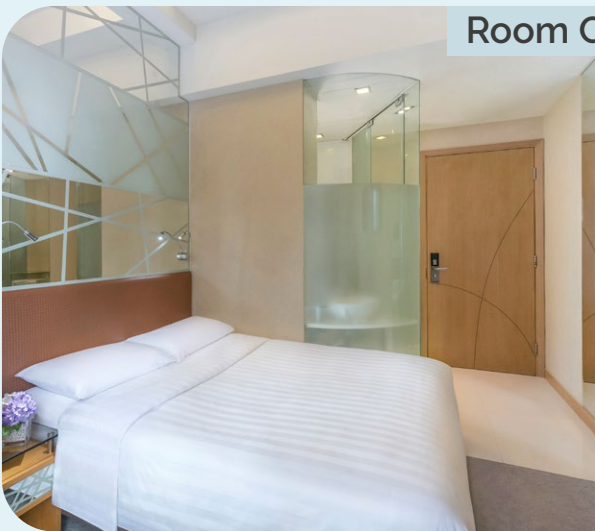


**DORSETT**  
MONGKOK HONG KONG  
香港旺角帝盛酒店

Exclusive for Hong Kong University Students

# 30 - night Long Stay Package



Room Comfort (18 sq.m.)

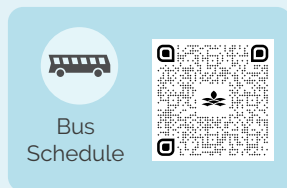
Valid from now – 30 June inclusive

**HK\$15,000** nett for 30 nights  
avg. HK\$500 per night

Valid from 1 July – 14 Sep inclusive

**HK\$18,000** nett for 30 nights  
avg. HK\$600 per night

## Benefits



- ✓ Free weekly housekeeping service
- ✓ High-speed 1000 mbps Wi-Fi via Dedicated Internet Access with International Bandwidth
- ✓ 24-hour self-service laundry at HK\$40 per 20 lbs wash / dry
- ✓ Free access to 24-hour gym room
- ✓ Free Daily Hotel Shuttle Bus Service to Mongkok, Yau Ma Tei, Tsim Sha Tsui and West Kowloon

**BOOK NOW**

Booking Period: From now until further notice | Stay Period: From now until 14 Sep 2024

# Discover the LOCAL VIBE in Mongkok



MTR Subway Station
 Mega Shopping Mall / Bazaar
 Foot Bridge
 Cosmetics / Skincare

- |   |  |  |  |
|---|--|--|--|
| <p><b>EAT</b></p> <ol style="list-style-type: none"> <li>1. Wing Shing Café</li> <li>2. Lost Stars Livehouse Bar &amp; Eatery</li> <li>3. Goodin' Out Coffee</li> <li>4. Daisifu Congee</li> <li>5. Noble Dessert</li> <li>6. Jade Palace Chinese Restaurant</li> <li>7. Hot Pot Empire</li> <li>8. San Kam Yuen Dai Pai Dong</li> <li>9. Tim Ho Wan</li> <li>10. Tsim Chai Noodle</li> </ol> | <ol style="list-style-type: none"> <li>11. Ying Kee Noodle</li> <li>12. Simple Me</li> <li>13. Paradise Classic</li> <li>14. Chicken Hof &amp; Soju</li> <li>15. Café de Coral</li> <li>16. Kam Wah Cafe</li> <li>17. Sher Wong Yip</li> <li>18. Daimaru Ramen</li> <li>19. One Poke Rock</li> <li>20. Lei Garden</li> </ol> | <p><b>PLAY</b></p> <ol style="list-style-type: none"> <li>21. Hung Shing Temple</li> <li>22. Hea-Welless Boutique</li> <li>23. 618 Shanghai Street</li> <li>24. Flower Market</li> <li>25. Bird Garden</li> <li>26. Goldfish Market</li> </ol> <p><b>LOVE</b></p> <ol style="list-style-type: none"> <li>27. Tai Kok Tsui Market</li> <li>28. Hong Kong Market</li> <li>29. Kee Wah Bakery</li> <li>30. Hang Heung Bakery</li> </ol> | <ol style="list-style-type: none"> <li>31. T.O.P This is Our Place</li> <li>32. Ladies Market</li> <li>33. Mongkok Computer Centre</li> <li>34. Sneakers Street</li> <li>35. Sin Tat Plaza</li> <li>36. Allied Plaza</li> <li>37. Trendy Zone</li> <li>38. Ying Kee Tea House</li> <li>39. Kwong Wah Street</li> </ol> |
|---|--|--|--|

## DIRECTION TO/FROM HKU

**Olympic Station ↔ HKU Station**  
 (travelling time: 25 minutes)

Walking route to Olympic Station

For further information, please contact Ms. Niki Koo

(852) 6368 8593
 (852) 3552 1259
 niki.koo@dorsetthotels.com

This offer is non-refundable. Once booking confirms, the whole period of stay will be charged in the case of shortened stay. This offer is subject to change without prior notice and hotel availability.

Dorsett Mongkok, Hong Kong | [www.mongkok.dorsetthotels.com](http://www.mongkok.dorsetthotels.com)

88 Tai Kok Tsui Road, Kowloon, Hong Kong

### Previous Guest Reviews



### Follow us on Social Media

[dorsettmongkokhongkong](https://www.facebook.com/dorsettmongkokhongkong)
[dorsettmongkokhk](https://www.instagram.com/dorsettmongkokhk)